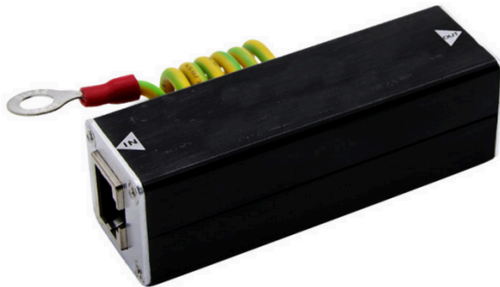


1 Port Gigabit RJ45 PoE Surge Protector

MODEL : WSPD-P01



Decription

This RJ45 Network SPD, operating voltage AC/DC 48V, response time less than 1ns, transmission speed 10/100/1000MHz, is the good partner of CCTV camera and protect the CCTV camera in thunderstorm days. It can be used for power supply, control signals, video signals as one of the monitoring system in the signal over-voltage protection.

Specifications

| | | |
|----------------------------|--|----------|
| Protection Object | POE camera, POE switch, or other terminal equipment with POE power supply function | |
| Limiting Voltage | | ≤ 60V |
| Operating Voltage | | 12-48V |
| Maximum Operating Voltage | | 57V |
| Maximum Discharge Power | | 10KA |
| Maximum Transmission Speed | | 1000Mbps |
| Response Time | | <0.1ns |
| Insertion Loss | | <0.1dB |
| Connector Type | RJ45 input *1, RJ45 output *1 | |
| Protection Pin | 1/2, 3/6, 4/5, 7/8 | |
| Dimension | 82*25*25mm | |
| Net Weight | 100g | |
| Working Environment | -40°C-- -85°C | |
| Housing Material | Aluminium | |

